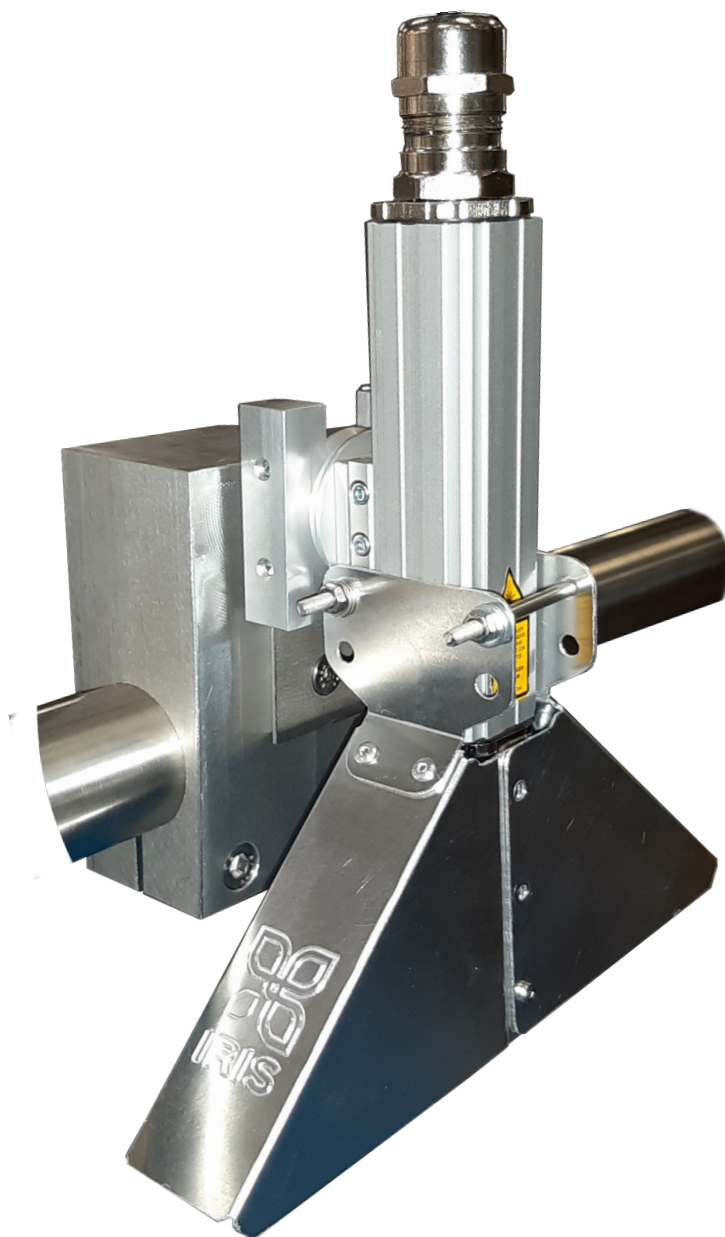
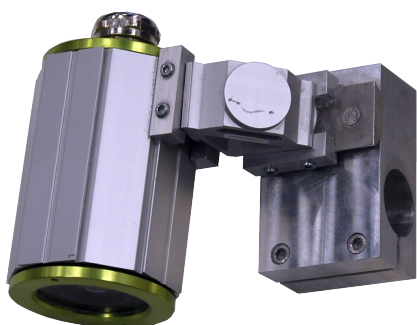
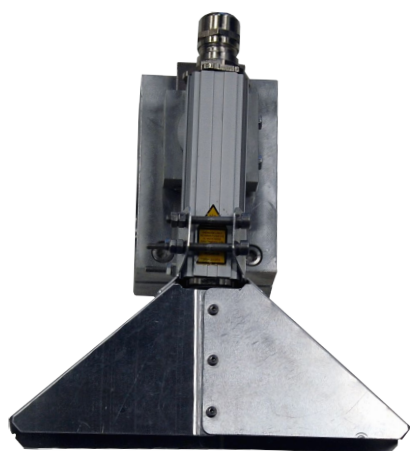


# FOREIGN BODIES DETECTOR



## DESCRIPTION:

Robust, accurate and non-invasive inline vision system for continuous foreign matter detection in bakery and pastry rolled doughs.

Safe for both the product and the operator, adaptable to any type of line, geometry, and speed.

## MAIN CHARACTERISTICS:

- Continuous analysis of 100% of the sample.
- Detection of opaque plastics, coloured films, zip ties, wood and cardboard among other foreign bodies.
- Based on a non-invasive technology. Harmless for the product and for operators.

## Foreign Bodies:

- Plastic
- Cardboard
- Bones
- Cartilage
- Insects
- Metal



## TECHNICAL SPECIFICATIONS

DETECTION	Optical (non-ionizing) radiation absorption
DIMENSIONS*	(380 + 300 + 150 )
POWER SUPPLY	24 VDC, 250 W
IP	IP66
FIELD OF VIEW (INSPECTION LINE)	320 TO 100 mm
MINIMUM DETECTABLE SIZE	2 mm
DATA OUTPUT	Ethernet Connectivity - Giga E
USER INTERFACE	External PC
COMPUTER	Core I5, 8GB RAM, 128 GB HDD
SOFTWARE	VISUM®

Patent: ES1258144U



Carretera d'Esplugues 39-41  
08940 Cornellà de Llobregat  
Spain +34 935 54 25 00  
[info@iris-eng.com](mailto:info@iris-eng.com) · [www.iris-eng.com](http://www.iris-eng.com) ·